

About the Author



My name is Giuseppe Chiodera, I was born in 1979 in Brescia. I graduated in 2004 at University Of Studies Brescia, the town where I live placed in between mountains and lakes. My activity is focused on diagnosis, detect and manage caries lesions in the very early stages. Thanks to the university of Bern and Geneva I had the opportunity to follow that street meeting great researchers. Today my passion is Aesthetic and Conservative Dentistry, especially find new tips and tricks. My professional hobbies are Diode Laser and Ozone. I have the pleasure and the opportunity to do lectures in different university masters and course, a great chance to share ideas and learn.

Product reviewed by



Predicta® Core from XL to XS size core build-ups

By Giuseppe Chiodera | 29 June 2021 | Style Italiano



Rebuilding large abutments is always a challenge. Both for the management of the adhesive surfaces and for the layering of the material because we have to reconstruct a lot of lost dental material.

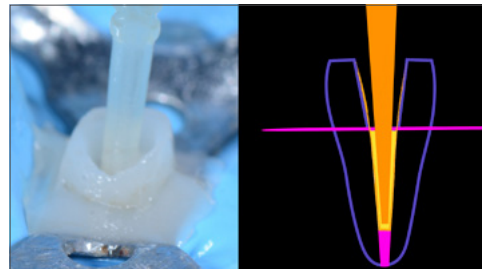


Fig. 1
An abutment entirely lacking the coronal part. In this scenario, we decided to cement the post with another cement. We can decide to rebuild the coronal component with Predicta Core anyway.



Fig. 2
We will exploit of Predicta Core in its capability of keeping its shape, thus we will employ the stackable in order always to be able to rebuild in one addition. cement. We can decide to rebuild the coronal component with Predicta Core anyway.

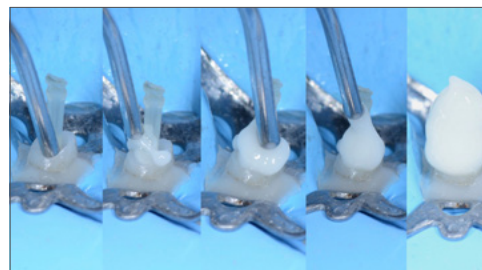


Fig. 3
With just one move, we rebuild the entire coronal abutment.

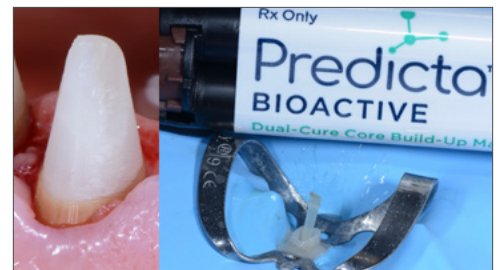


Fig. 4
As soon as it is ready, one should notice the material's optimal texture when in contact with the burr, it looks like composite.

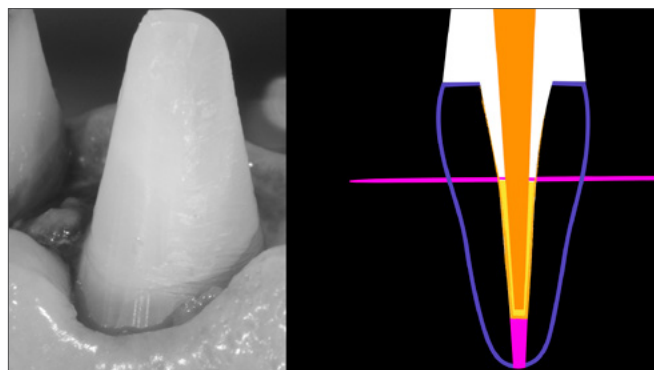


Fig. 5

In this case for the radicular component we used another type of cement for the posts and for the coronal component Predicta Core. Surely this is a more complicated approach, an example to remember that the less material is used, the simpler our dentistry life will be. Remember to always simplify.



Fig. 6

Reconstruction of dyschromic abutment, Predicta Core has excellent opacity.

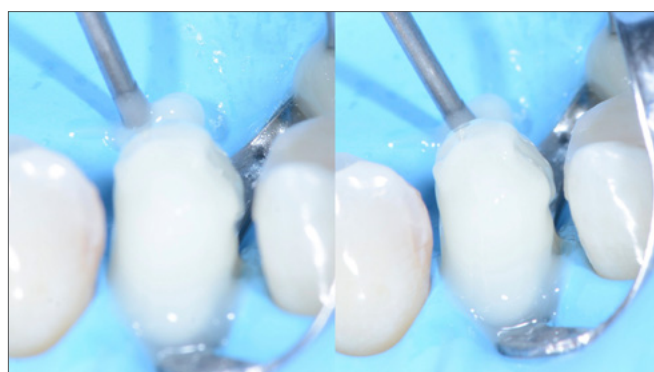


Fig. 7

Reconstruction completed briefly!



Fig. 8

Reconstruction with Predicta Core of a abutment with little retentions in the canals, with no post.

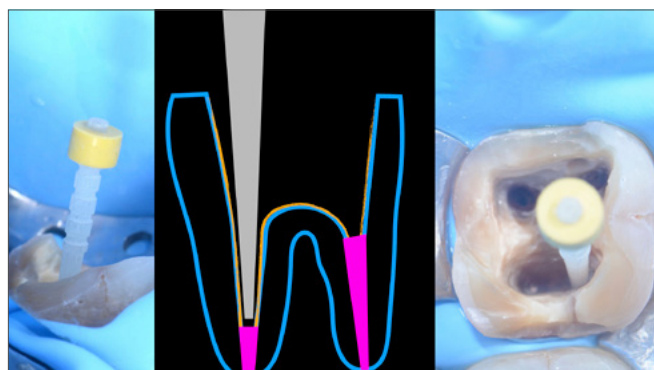


Fig. 9

We decide to place just one post in the abutment, but to exploit the first millimeters of the mesial canals in order an even bigger retention of the reconstruction material.

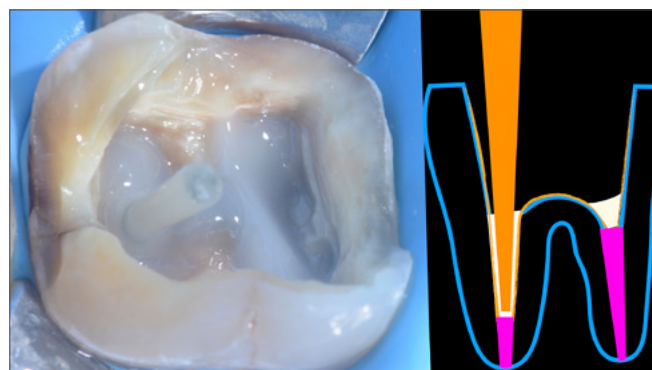


Fig. 10

We put Predicta Core in all the canals, we place the post in the distal one, after being treated with adhesive and correctly shortened.

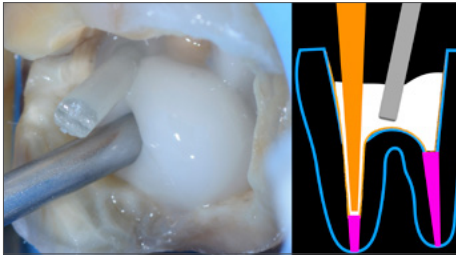


Fig. 11
We proceed by building the coronal component, always with the same material.

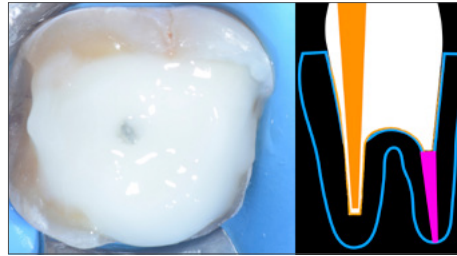


Fig. 12
In a few minutes, we are done with the build-up.

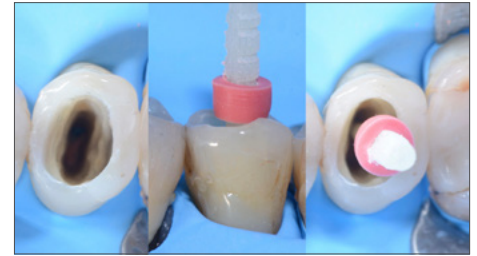


Fig. 13
With smaller teeth with very narrow cavities it is definitely easier to use the same material on the entire reconstruction. We begin by choosing the post and measuring it.



Fig. 14
We then proceed treating the post, the cavity and the canal adhesively. We then inject Predicta Core.



Fig. 15
We will rebuild everything with just one material.

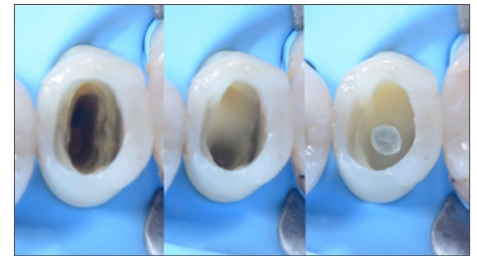


Fig. 16
Occlusal vision, from the left: adhesive, Predicta Core in the canal, and post in place.



Fig. 17
Lateral and occlusal vision of the finished pre-prosthetic reconstruction.

Conclusions

Use a self / photo curing material that avoids wasting time during the stratification, allows us to concentrate on the other prosthetically important phases such as: the management of the abutment, preparation of the abutment and relining of the provisional. Clinical phases that in a very compromised tooth will be more complex and will require more attention from us.

Simplifying steps helps us focus and invest more time on the most difficult ones.